

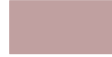



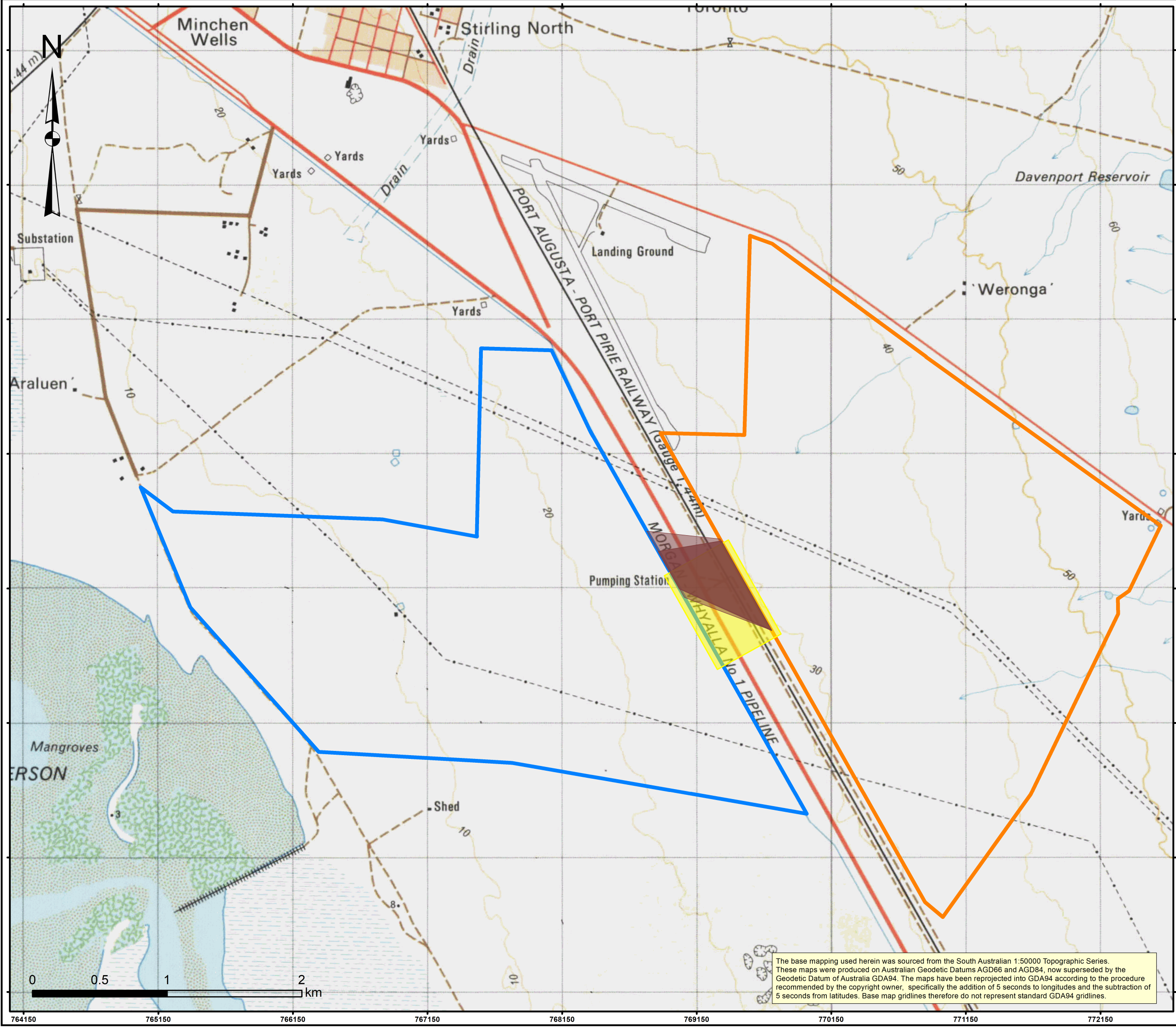
Port Augusta Renewable Energy Park Stage 2

Figure V3.06.03

Infrastructure Outside of Project Site

Legend

-  East Site
-  West Site
-  Electricity Export Envelopes
-  Water Connection Envelope



Ver	Date	Drawn by	Checked	Approved
V1	08/12/2017	AM	LM	DB

Coordinate System
UTM Zone 53 Southern Hemisphere

Size
A3

Scale 1:26,500 Printed @ A3

Filename:
3_Fig_V3_06_03_InfOutSite

Photography/Cadastral/Mapping Data supplied/copyright by Mapland Department of Environment, Water and Natural Resources



www.dpenergy.com

© DP Energy, All rights reserved, 2017








The base mapping used herein was sourced from the South Australian 1:50000 Topographic Series. These maps were produced on Australian Geodetic Datums AGD66 and AGD84, now superseded by the Geodetic Datum of Australia GDA94. The maps have been reprojected into GDA94 according to the procedure recommended by the copyright owner, specifically the addition of 5 seconds to longitudes and the subtraction of 5 seconds from latitudes. Base map gridlines therefore do not represent standard GDA94 gridlines.

Port Augusta Renewable Energy Park Stage 2

Figure V3.06.04

Stage 1 Elements for use in Stage 2

Legend

-  East Site
-  West Site
-  Track
-  Access Points
-  Borrow Pit Search Area
-  Batching Plant
-  Stage 1 Substation

Ver	Date	Drawn by	Checked	Approved
V1	15/12/2017	AM	LM	DB

Coordinate System UTM Zone 53 Southern Hemisphere	Size A3
---	-------------------

Scale 1:35,000 Printed @ A3

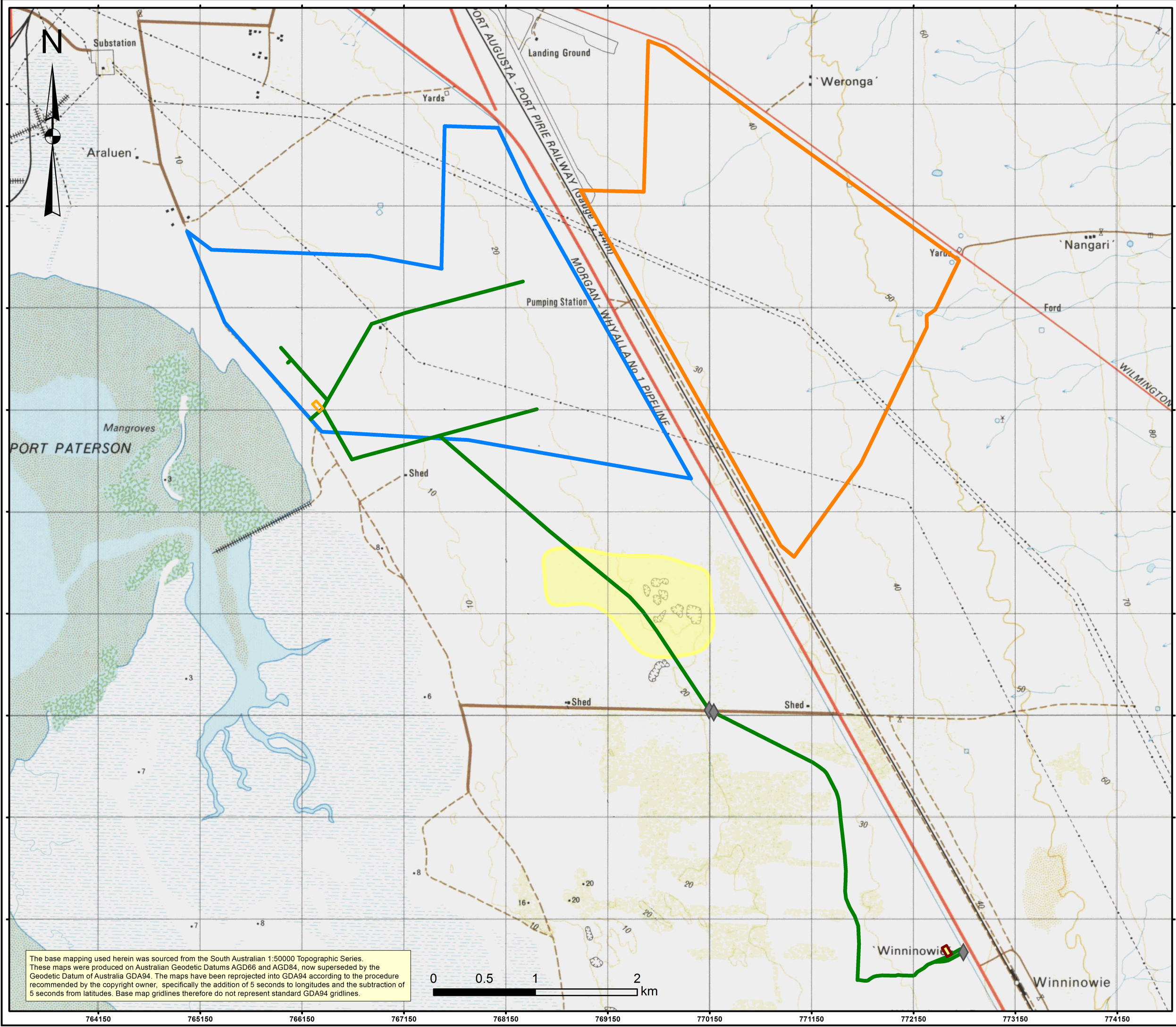
Filename:
3_Fig_V3_06_04_UsedStg1Elem

Photography/Cadastral/Mapping Data supplied/copyright by Mapland Department of Environment, Water and Natural Resources



www.dpenergy.com

© DP Energy, All rights reserved, 2017





The base mapping used herein was sourced from the South Australian 1:50000 Topographic Series. These maps were produced on Australian Geodetic Datums AGD66 and AGD84, now superseded by the Geodetic Datum of Australia GDA94. The maps have been reprojected into GDA94 according to the procedure recommended by the copyright owner, specifically the addition of 5 seconds to longitudes and the subtraction of 5 seconds from latitudes. Base map gridlines therefore do not represent standard GDA94 gridlines.

Port Augusta Renewable Energy Park Stage 2

Figure V3.06.05

Typical 2MW DC Array

Legend

-  Solar PV Table
-  Solar Inverter

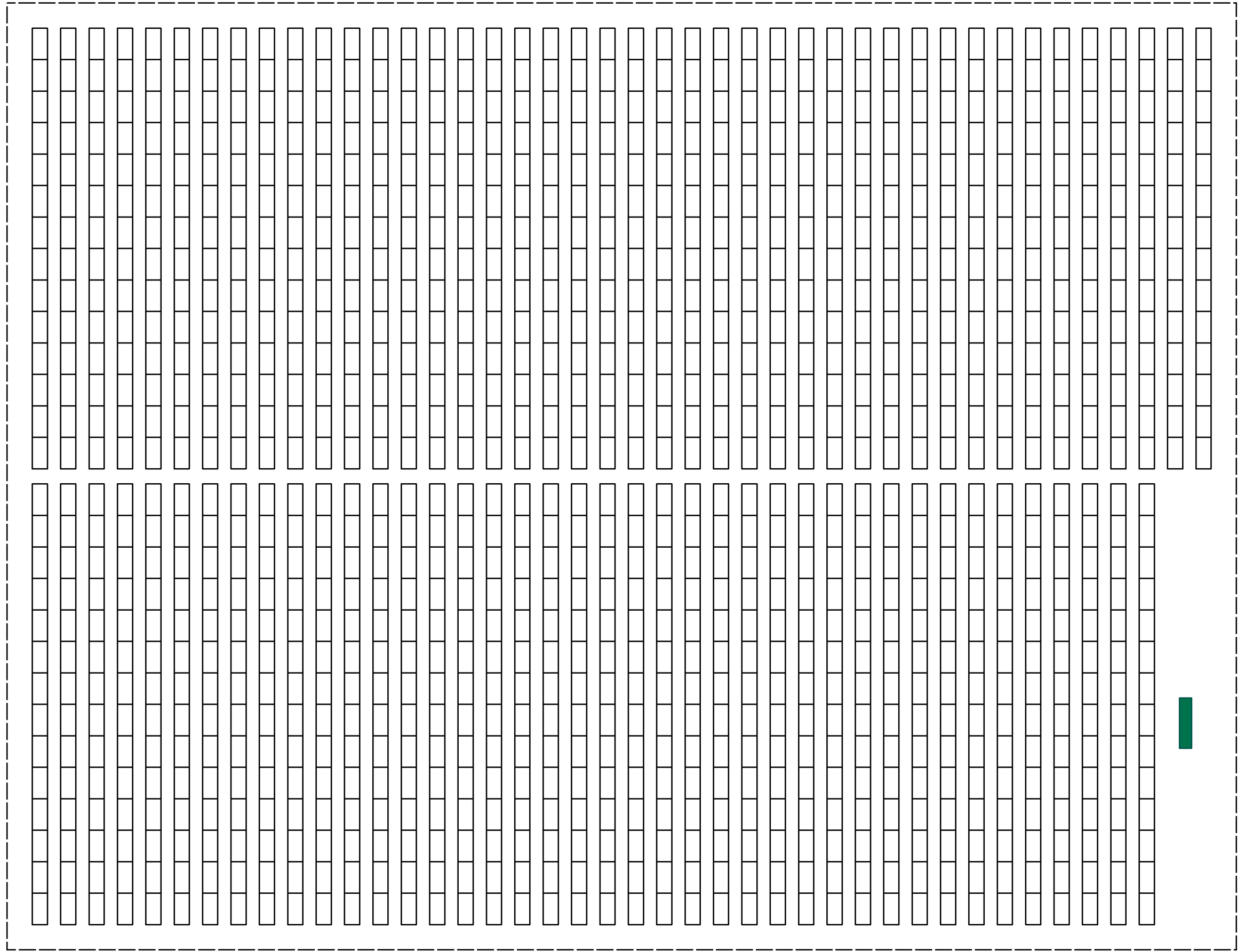
Notes:
ARRAY INDICATIVE ONLY. SUBJECT TO
REQUIREMENTS OF EPC CONTRACTOR.

Ver	Date	Drawn by	Checked	Approved
V1	08/12/2017	AM	LM	DB

Coordinate System	Size A3
-------------------	------------

Scale Printed @ A3

Filename:
3_Fig_V3_06_05_Typ2MWAr

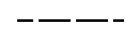
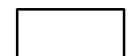



Port Augusta Renewable Energy Park Stage 2

Figure V3.06.06

Typical PV Field

Legend

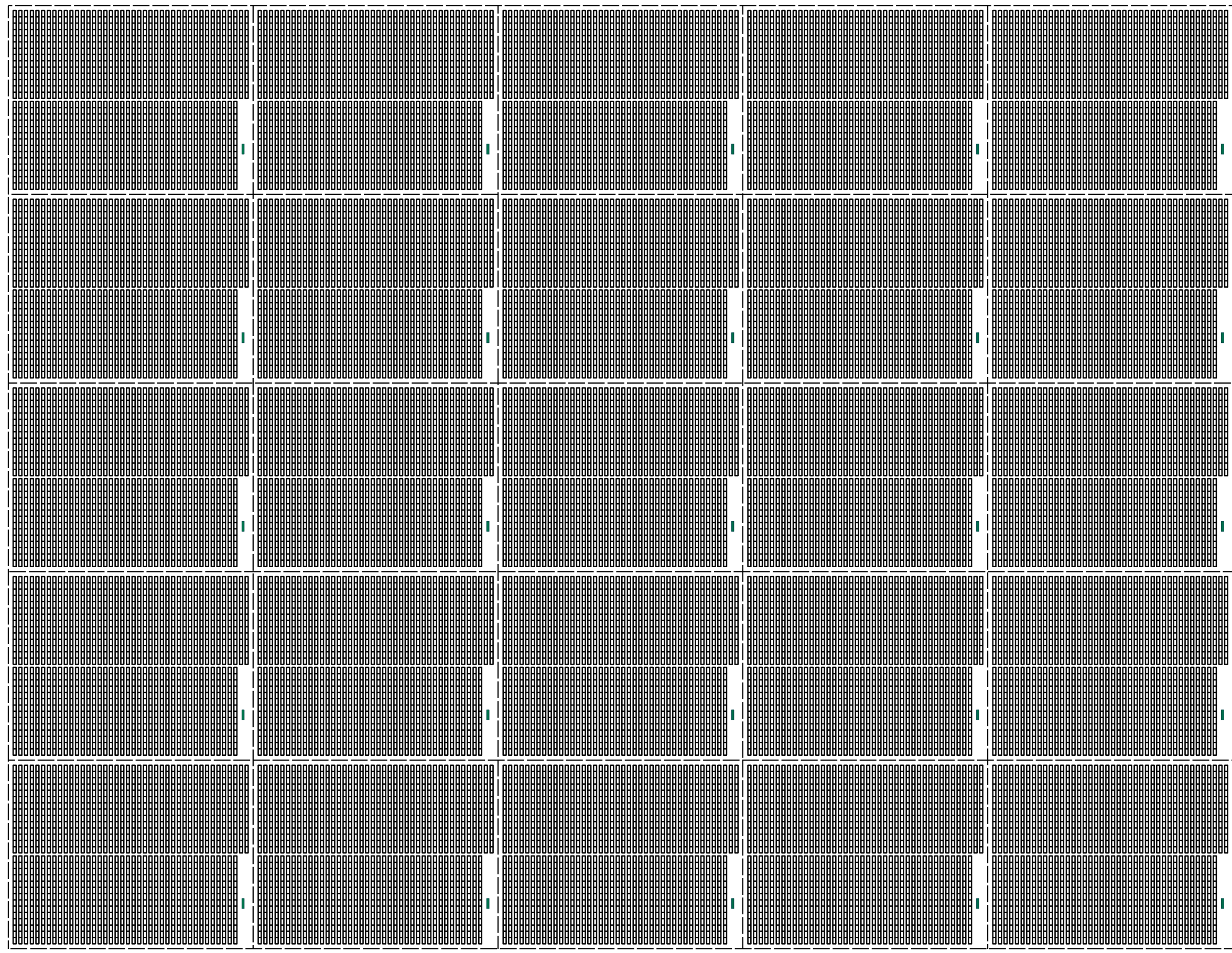
-  Solar Array
-  Solar PV Table
-  Solar Inverter

Notes:
FIELD INDICATIVE ONLY. SUBJECT TO
REQUIREMENTS OF EPC CONTRACTOR.

Ver	Date	Drawn by	Checked	Approved
V1	08/12/2017	AM	LM	DB
Coordinate System				Size A3

Scale Printed @ A3

Filename:
3_Fig_V3_06_06_TypPVField



Port Augusta Renewable Energy Park Stage 2

Figure V3.06.07

Typical Turbo Synchronous Condenser Layout

- Notes:**
- LAYOUT INDICATIVE ONLY. SUBJECT TO REQUIREMENTS OF EPC CONTRACTOR.
 - IMAGE COURTESY OF ANDRITZ HYDRO. FOR ILLUSTRATION ONLY.

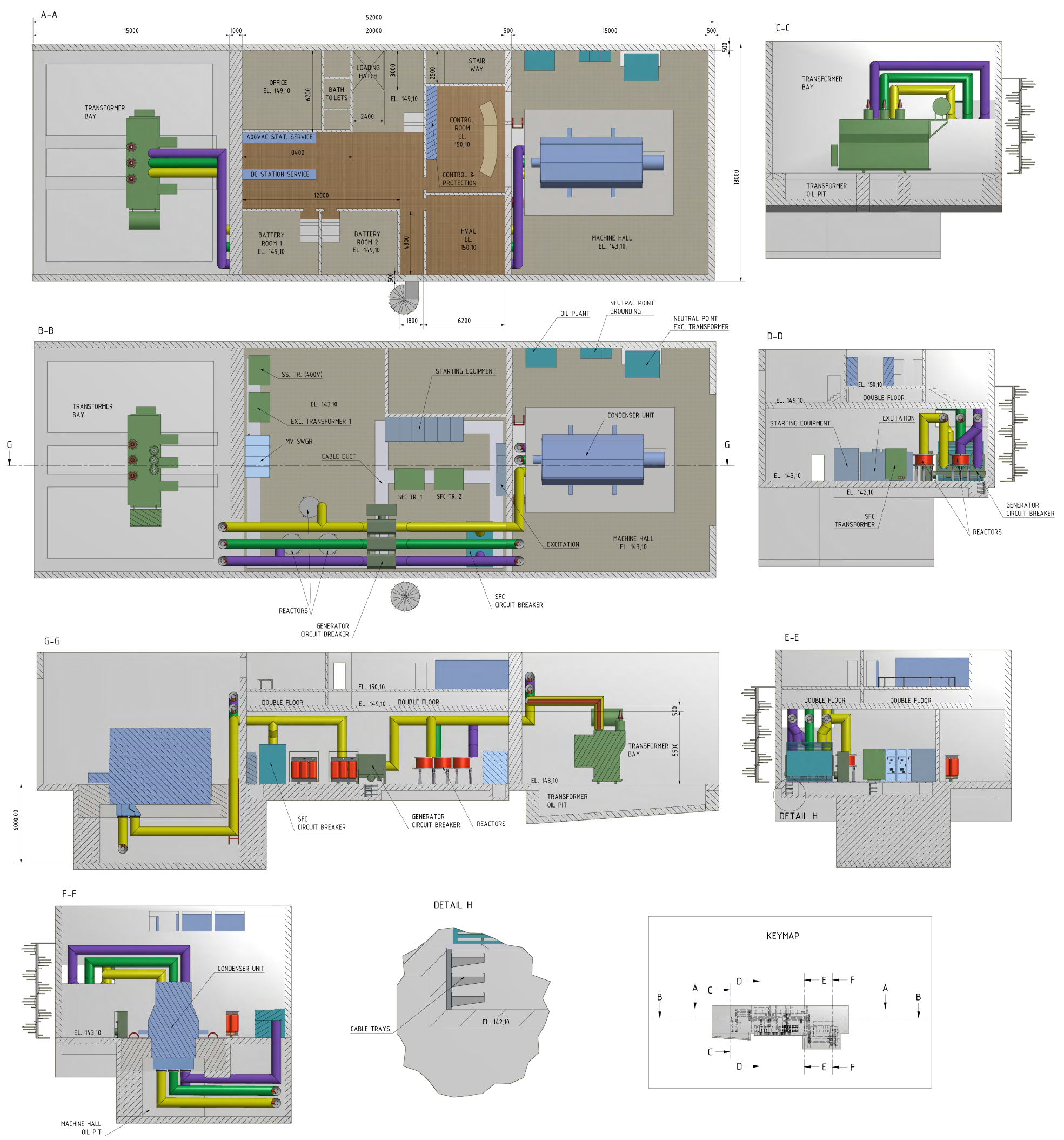
Ver	Date	Drawn by	Checked	Approved
V1	08/12/2017	AM	LM	DB
Coordinate System				Size A3

Scale Printed @ A3

Filename:
3_Fig_V3_06_07_TypTurSyncon



© DP Energy, All rights reserved, 2017

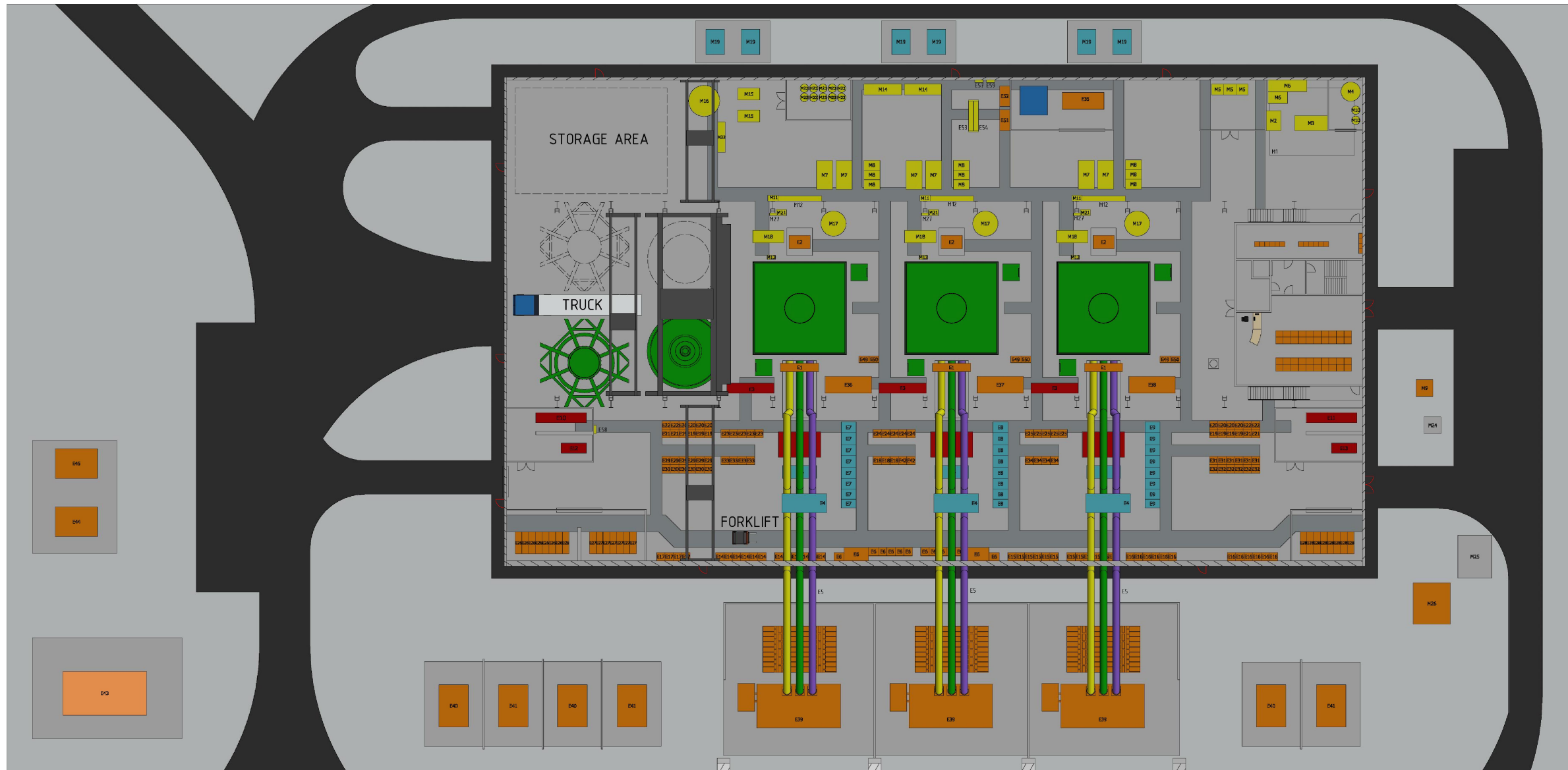
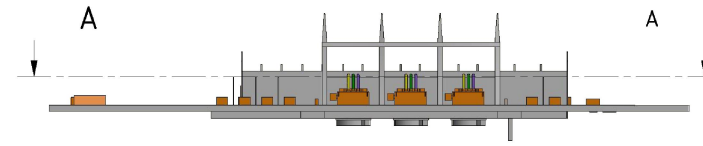


Port Augusta Renewable Energy Park Stage 2

Figure V3.06.08

Typical Hydro Synchronous Condenser Layout

A-A



Notes:

1. LAYOUT INDICATIVE ONLY. SUBJECT TO REQUIREMENTS OF EPC CONTRACTOR.
2. IMAGE COURTESY OF ANDRITZ HYDRO. FOR ILLUSTRATION ONLY.

Ver	Date	Drawn by	Checked	Approved
V1	08/12/2017	AM	LM	DB

Coordinate System	Size A3
-------------------	------------

Scale Printed @ A3

Filename:

3_Fig_V3_06_08_TypHydSyncon



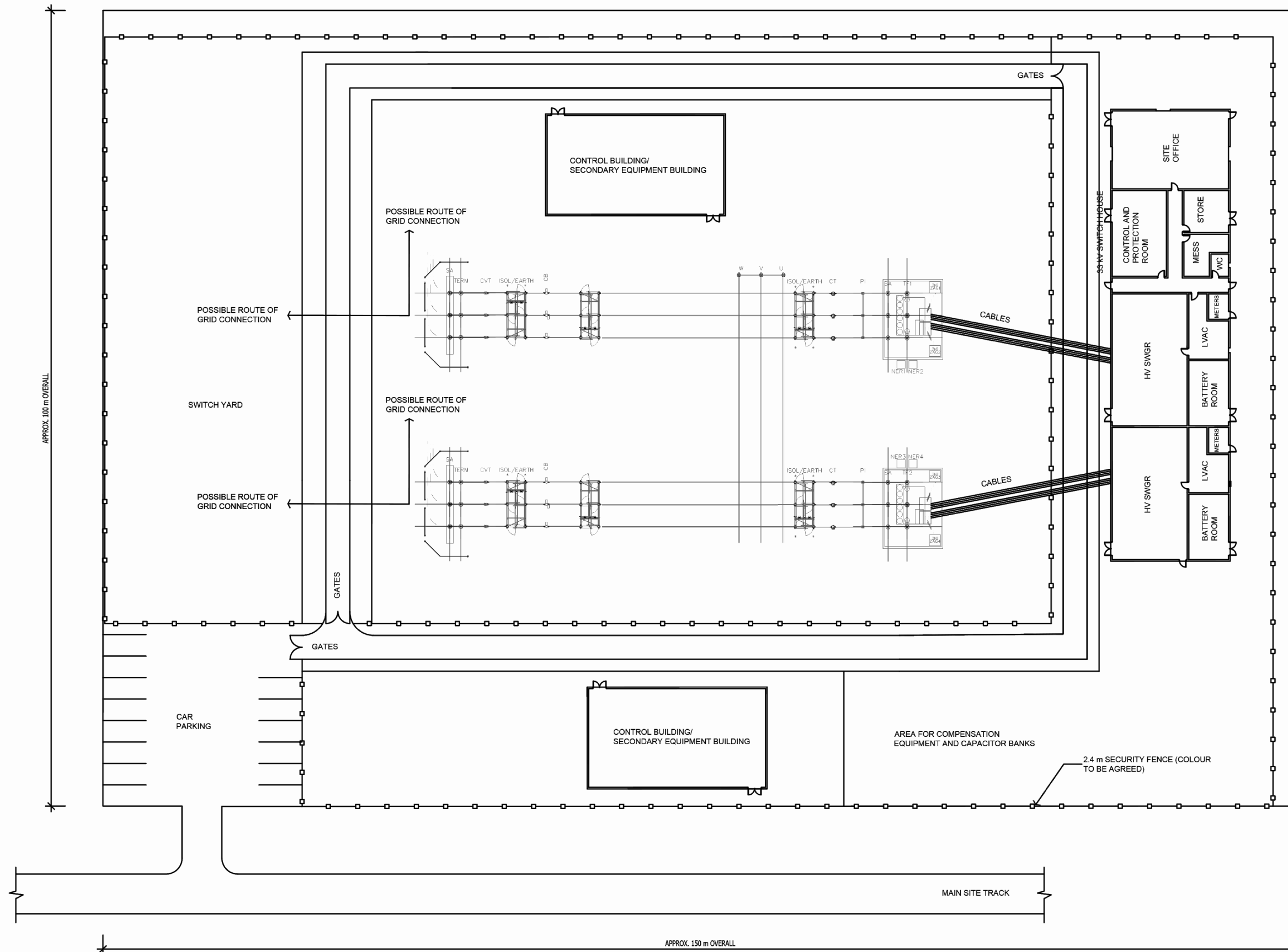
www.dpenergy.com

© DP Energy, All rights reserved, 2017

Port Augusta Renewable Energy Park Stage 2

Figure V3.06.09

Main Substation, Control Room and Permanent Site Office



Notes:

1. THIS DRAWING IS FOR DEVELOPMENT PURPOSES ONLY, AND NOT FOR CONSTRUCTION.
2. DIMENSIONS NOT TO BE SCALED.
3. LAYOUT, ROOM DESCRIPTIONS, POSITIONS OF DOORS AND GATES ARE INDICATIVE ONLY AND SUBJECT TO CHANGE.
4. ACTUAL COMPOUND SIZE WILL BE BASED ON THE ELECTRICAL EQUIPMENT REQUIRED.

Ver	Date	Drawn by	Checked	Approved
V1	14/12/2017	AM	JT	DB

Coordinate System	Size A3
-------------------	------------

Scale 1:500 Printed @ A3

Filename:

3_Fig_V3_06_09_MainSub







www.dpenergy.com

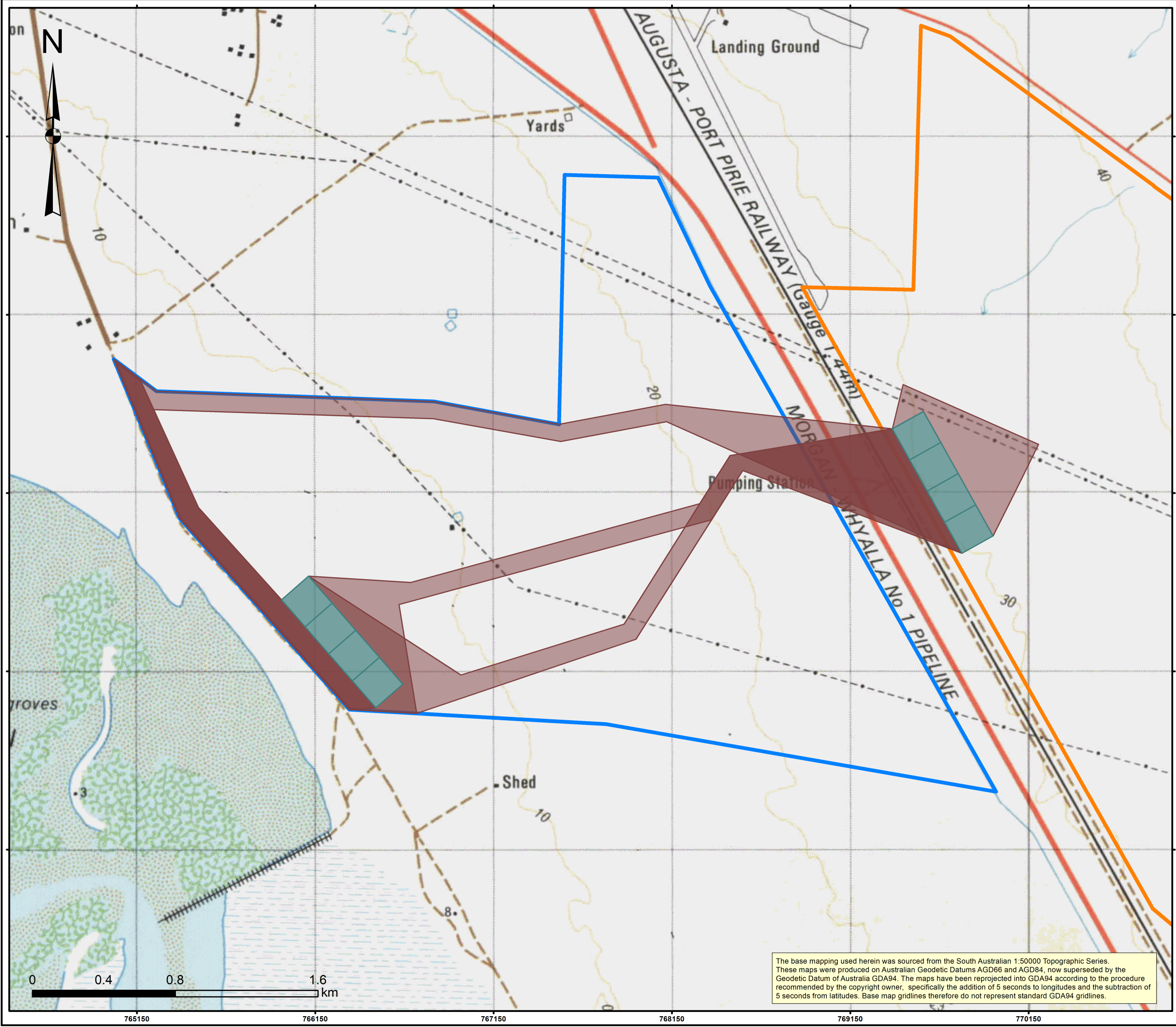
Port Augusta Renewable Energy Park Stage 2

Figure V3.06.10

Power Export Options

Legend

-  East Site
-  West Site
-  Electrical/Construction Envelopes
-  Electricity Export Envelopes



Ver	Date	Drawn by	Checked	Approved
V1	08/12/2017	AM	LM	DB

Coordinate System
UTM Zone 53 Southern Hemisphere

Size
A3

Scale 1:20,000 Printed @ A3

Filename:
3_Fig_V3_06_10_ExptOpt

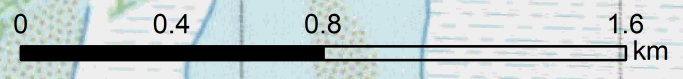
Photography/Cadastral/Mapping Data supplied/copyright by Mapland Department of Environment, Water and Natural Resources



www.dpenergy.com

© DP Energy, All rights reserved, 2017

The base mapping used herein was sourced from the South Australian 1:50000 Topographic Series. These maps were produced on Australian Geodetic Datums AGD66 and AGD84, now superseded by the Geodetic Datum of Australia GDA94. The maps have been reprojected into GDA94 according to the procedure recommended by the copyright owner, specifically the addition of 5 seconds to longitudes and the subtraction of 5 seconds from latitudes. Base map gridlines therefore do not represent standard GDA94 gridlines.



Port Augusta Renewable Energy Park Stage 2

Figure V3.06.11

Temporary Construction Compound Envelopes

Legend

- East Site
- West Site
- Construction Envelopes

Ver	Date	Drawn by	Checked	Approved
V1	15/12/2017	AM	LM	DB

Coordinate System UTM Zone 53 Southern Hemisphere	Size A3
---	-------------------

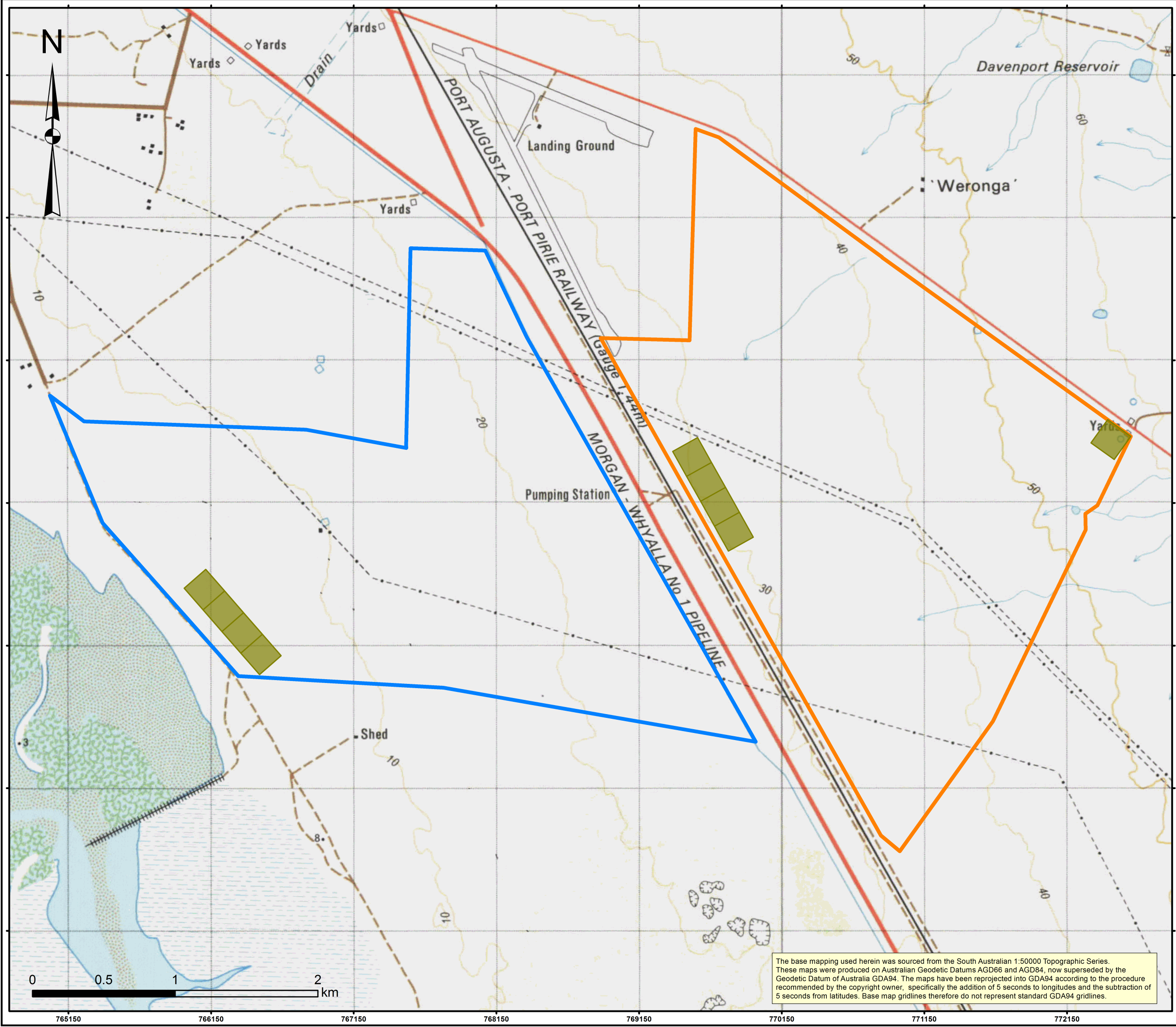
Scale 1:25,000 Printed @ A3

Filename:
3_Fig_V3_06_11_TCCS

Photography/Cadastral/Mapping Data supplied/copyright by Mapland Department of Environment, Water and Natural Resources



© DP Energy, All rights reserved, 2017

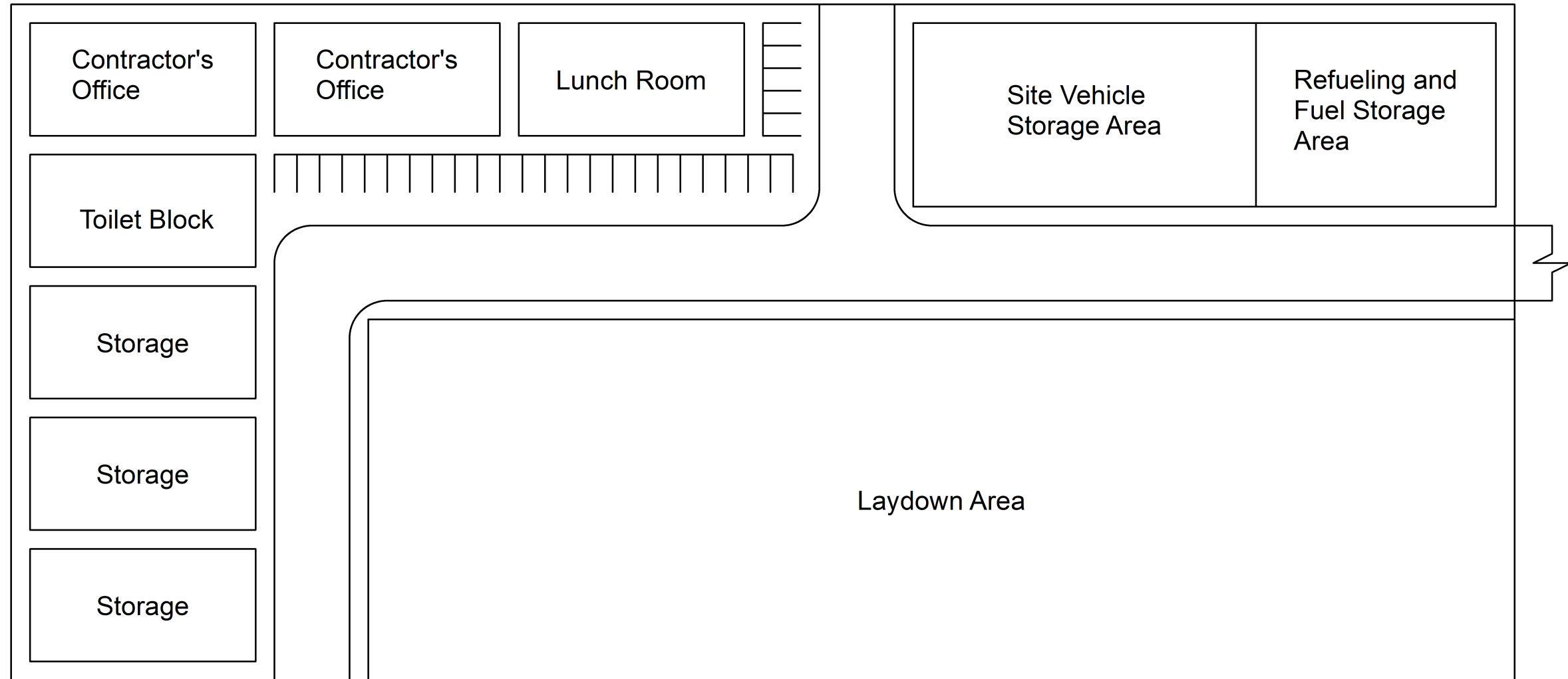


The base mapping used herein was sourced from the South Australian 1:50000 Topographic Series. These maps were produced on Australian Geodetic Datums AGD66 and AGD84, now superseded by the Geodetic Datum of Australia GDA94. The maps have been reprojected into GDA94 according to the procedure recommended by the copyright owner, specifically the addition of 5 seconds to longitudes and the subtraction of 5 seconds from latitudes. Base map gridlines therefore do not represent standard GDA94 gridlines.

Port Augusta Renewable Energy Park Stage 2

Figure V3.06.12

Typical Temporary Construction Compound Layout



Notes:
LAYOUT INDICATIVE ONLY. SUBJECT TO REQUIREMENTS OF EPC CONTRACTOR.

Ver	Date	Drawn by	Checked	Approved
V1	08/12/2017	AM	LM	DB

Coordinate System **Size**
A3

Scale Printed @ A3

Filename:
3_Fig_V3_06_12_TypTCCLay

