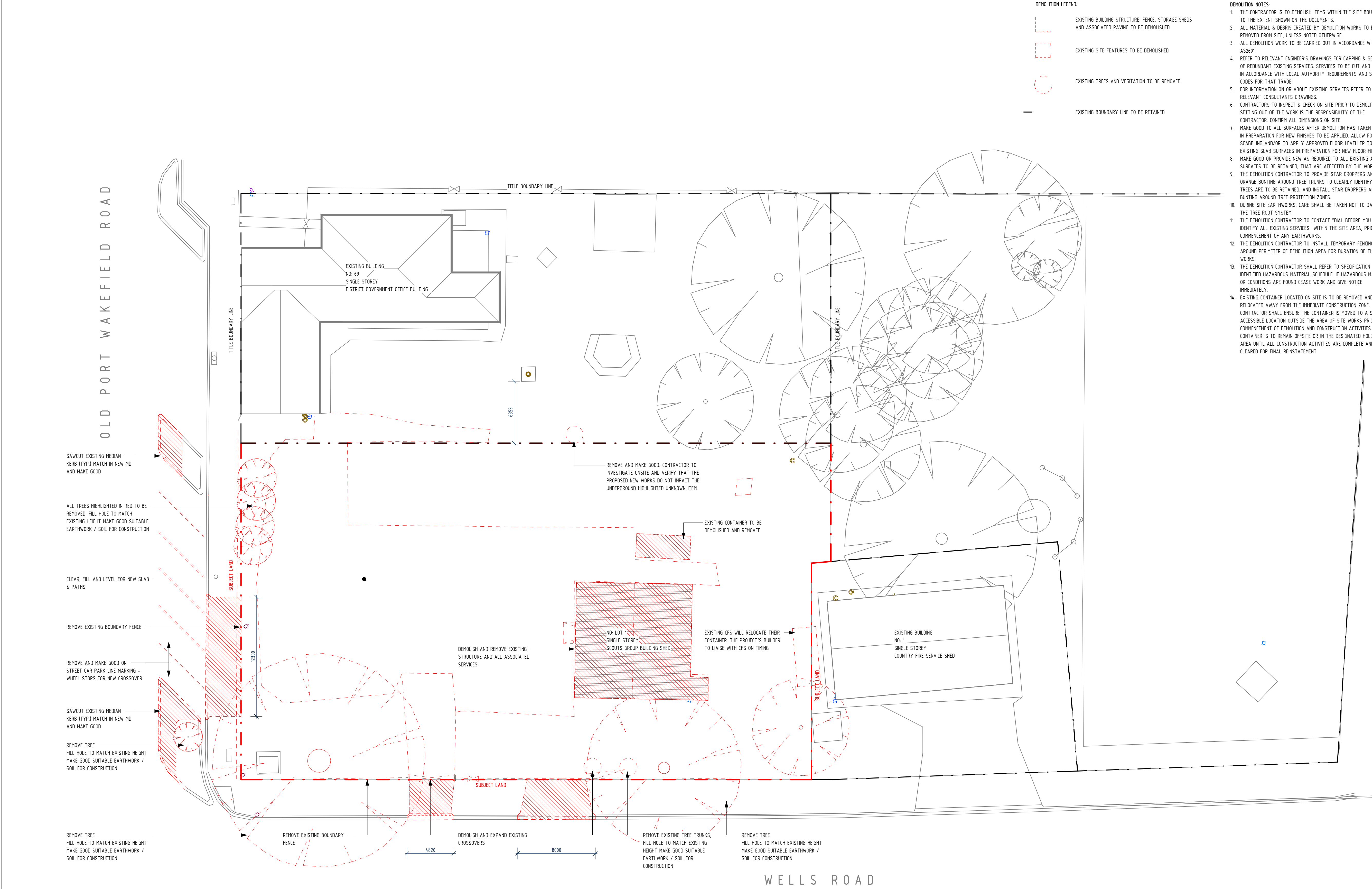




SATELLITE LOCATION PLAN

SAAS AMBULANCE STATION

SK00	TITLE SHEET	A
SK10	SITE PLAN	A
SK11	DEMOLITION PLAN	A
SK21	FLOOR PLAN	A
SK22	ROOF PLAN	A
SK23	REFLECTED CEILING PLAN	-
SK31	ELEVATIONS	A
SK90	ARTIST IMPRESSION	A



- DEMOLITION LEGEND:
- EXISTING BUILDING STRUCTURE, FENCE, STORAGE SHEDS AND ASSOCIATED PAVING TO BE DEMOLISHED
 - EXISTING SITE FEATURES TO BE DEMOLISHED
 - EXISTING TREES AND VEGETATION TO BE REMOVED
 - EXISTING BOUNDARY LINE TO BE RETAINED

- DEMOLITION NOTES:
- THE CONTRACTOR IS TO DEMOLISH ITEMS WITHIN THE SITE BOUNDARY TO THE EXTENT SHOWN ON THE DOCUMENTS.
 - ALL MATERIAL & DEBRIS CREATED BY DEMOLITION WORKS TO BE REMOVED FROM SITE, UNLESS NOTED OTHERWISE.
 - ALL DEMOLITION WORK TO BE CARRIED OUT IN ACCORDANCE WITH AS2601.
 - REFER TO RELEVANT ENGINEER'S DRAWINGS FOR CAPPING & SEALING OF REDUNDANT EXISTING SERVICES. SERVICES TO BE CUT AND SEALED IN ACCORDANCE WITH LOCAL AUTHORITY REQUIREMENTS AND S.A.A CODES FOR THAT TRADE.
 - FOR INFORMATION ON OR ABOUT EXISTING SERVICES REFER TO RELEVANT CONSULTANT'S DRAWINGS.
 - CONTRACTORS TO INSPECT & CHECK ON SITE PRIOR TO DEMOLITION. SETTING OUT OF THE WORK IS THE RESPONSIBILITY OF THE CONTRACTOR. CONFIRM ALL DIMENSIONS ON SITE.
 - MAKE GOOD TO ALL SURFACES AFTER DEMOLITION HAS TAKEN PLACE IN PREPARATION FOR NEW FINISHES TO BE APPLIED. ALLOW FOR SCABBING AND/OR TO APPLY APPROVED FLOOR LEVELLER TO EXISTING SLAB SURFACES IN PREPARATION FOR NEW FLOOR FINISHES.
 - MAKE GOOD OR PROVIDE NEW AS REQUIRED TO ALL EXISTING ADJOINING SURFACES TO BE RETAINED, THAT ARE AFFECTED BY THE WORKS.
 - THE DEMOLITION CONTRACTOR TO PROVIDE STAR DROPPERS AND ORANGE BUNTING AROUND TREE TRUNKS TO CLEARLY IDENTIFY WHICH TREES ARE TO BE RETAINED, AND INSTALL STAR DROPPERS AND BUNTING AROUND TREE PROTECTION ZONES.
 - DURING SITE EARTHWORKS, CARE SHALL BE TAKEN NOT TO DAMAGE THE TREE ROOT SYSTEM.
 - THE DEMOLITION CONTRACTOR TO CONTACT "DIAL BEFORE YOU DIG", TO IDENTIFY ALL EXISTING SERVICES WITHIN THE SITE AREA, PRIOR TO COMMENCEMENT OF ANY EARTHWORKS.
 - THE DEMOLITION CONTRACTOR TO INSTALL TEMPORARY FENCING AROUND PERIMETER OF DEMOLITION AREA FOR DURATION OF THE WORKS.
 - THE DEMOLITION CONTRACTOR SHALL REFER TO SPECIFICATION FOR IDENTIFIED HAZARDOUS MATERIAL SCHEDULE. IF HAZARDOUS MATERIALS OR CONDITIONS ARE FOUND CEASE WORK AND GIVE NOTICE IMMEDIATELY.
 - EXISTING CONTAINER LOCATED ON SITE IS TO BE REMOVED AND RELOCATED AWAY FROM THE IMMEDIATE CONSTRUCTION ZONE. CONTRACTOR SHALL ENSURE THE CONTAINER IS MOVED TO A SECURE, ACCESSIBLE LOCATION OUTSIDE THE AREA OF SITE WORKS PRIOR TO COMMENCEMENT OF DEMOLITION AND CONSTRUCTION ACTIVITIES. CONTAINER IS TO REMAIN OFFSITE OR IN THE DESIGNATED HOLDING AREA UNTIL ALL CONSTRUCTION ACTIVITIES ARE COMPLETE AND SITE IS CLEARED FOR FINAL REINSTATEMENT.

GRIEVE
GILLET
ARCHITECTS

243 Pile Street Adelaide
South Australia 5000
T +61 8232 3626
admin@ggarc.com.au
ggarc.com.au

Consultant

WAX DESIGN

WAX Design Pty Ltd
Suite 3/201 Pile Street, Adelaide, SA, 5000
Telephone: +61 8 8215 9144
Email: studio@waxdesign.com.au
www.waxdesign.com.au

Consultant

secon

CONSULTING ENGINEERS
Seccon Consulting Engineers
456 Pulteney Street, Adelaide, SA, 5000
Telephone: +61 8 8273 7800
Email: enginew@secon.net.au
www.secon.net.au

Consultant

tonkin

Tonkin
Level 2, 170 Frome street, Adelaide, SA, 5000
Telephone: +61 8 8273 3100
www.tonkin.com.au
Email: adelaide@tonkin.com.au

Drawing Status

100% ISSUE

8	05.08.25	ISSUE FOR COORDINATION	JN
7	13.05.25	95% DOCUMENTATION ISSUE	WS
6	22.05.25	ISSUE FOR COORDINATION	WS
5	16.05.25	ISSUE FOR COORDINATION	DM
4	17.04.25	60% DOCUMENTATION ISSUE	DM
3	02.04.25	ISSUE FOR COORDINATION	DM
2	28.03.25	ISSUE FOR COORDINATION	HB
1	07.03.25	ISSUE FOR COORDINATION	DM
0	18.02.25	ISSUE FOR COORDINATION	HB

REV. DATE

AMENDMENTS

INITIAL

Government of South Australia
Department for Infrastructure
and Transport

© COPYRIGHT - GOVERNMENT OF SOUTH AUSTRALIA - DIT
SETTING OUT OF THE WORK IS THE RESPONSIBILITY OF THE CONTRACTOR
ALL DIMENSIONS TO BE VERIFIED ON SITE.
DISCREPANCIES TO BE IMMEDIATELY REPORTED TO THE SUPERINTENDENT
THIS DRAWING SHALL BE READ IN CONJUNCTION WITH ALL OTHER CONTRACT
DOCUMENTS

PRE- TENDER

CONTRACTOR

DATE

WITNESS

DATE

CONTRACT NAME

SAAS AMBULANCE STATION

SITE ADDRESS

LOT 51 OLD PORT WAKEFIELD ROAD,
TWO WELLS, SOUTH AUSTRALIA, 5501

DRAWING TITLE

DEMOLITION PLAN

CONTRACT NO.
209-A-2025

DRAWN BY - CHECKED BY
Author Checker

PSC JOB NO.
24081

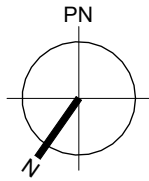
SCALE - SHEET SIZE
As indicated@A1

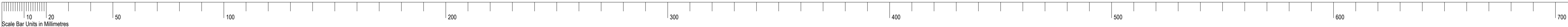
DPTI ASSET NO.
14077

SHEET NO.
A1101

DPTI DRAWING NO.
7232-AR-2025

REVISION
8

7231-AR-2025 13



OLD PORT WAKEFIELD ROAD

1 2 3 4 5 6 7 8



WELLS ROAD

**GRIEVE
GILLET
ARCHITECTS**
243 Pile Street Adelaide
South Australia 5000
T +61 8232 3626
admin@ggarc.com.au
ggarc.com.au

Consultant
WAX DESIGN
WAX Design Pty Ltd
Suite 3/201 Pile Street, Adelaide, SA, 5000
Telephone: +61 8 8215 9144
Email: studio@waxdesign.com.au
www.waxdesign.com.au

Consultant
secon
CONSULTING ENGINEERS
Secon Consulting Engineers
456 Pulteney Street, Adelaide, SA, 5000
Telephone: +61 8 8273 7800
Email: engineers@secon.net.au
www.secon.net.au

Consultant
tonkin
Tonkin
Level 2, 170 Frome Street, Adelaide, SA, 5000
Telephone: +61 8 8273 3100
www.tonkin.com.au
Email: adelaide@tonkin.com.au

Drawing Status
100% ISSUE

REV	DATE	AMENDMENTS	INITIAL
14	05.08.25	ISSUE FOR COORDINATION	JN
13	04.08.25	ISSUE FOR COORDINATION	JN
12	31.07.25	ISSUE FOR COORDINATION	JN
11	24.07.25	ISSUE FOR COORDINATION	JN
10	20.06.25	ISSUE FOR COORDINATION	WS
9	13.06.25	95% DOCUMENTATION ISSUE	WS
8	22.05.25	ISSUE FOR COORDINATION	WS
7	16.05.25	ISSUE FOR COORDINATION	DM
6	17.04.25	60% DOCUMENTATION ISSUE	DM
5	14.04.25	ISSUE FOR COORDINATION	DM
4	02.04.25	ISSUE FOR COORDINATION	DM
3	01.04.25	ISSUE FOR COORDINATION	DM
2	28.03.25	ISSUE FOR COORDINATION	HB
1	07.03.25	ISSUE FOR COORDINATION	DM
0	18.02.25	ISSUE FOR COORDINATION	HB

GOVERNMENT OF SOUTH AUSTRALIA
Government of South Australia
Department for Infrastructure
and Transport

© COPYRIGHT - GOVERNMENT OF SOUTH AUSTRALIA - DIT
SETTING OUT OF THE WORK IS THE RESPONSIBILITY OF THE CONTRACTOR
ALL DIMENSIONS TO BE VERIFIED ON SITE
DISCREPANCIES TO BE IMMEDIATELY REPORTED TO THE SUPERINTENDENT
THIS DRAWING SHALL BE READ IN CONJUNCTION WITH ALL OTHER CONTRACT
DOCUMENTS

PRE-TENDER
CONTRACTOR

WITNESS

CONTRACT NAME
SAAS AMBULANCE STATION

SITE ADDRESS
**LOT 51 OLD PORT WAKEFIELD ROAD,
TWO WELLS, SOUTH AUSTRALIA, 5501**

DRAWING TITLE

FLOOR PLAN

CONTRACT NO.
209-A-2025

PSC JOB NO.
24081

DPTI ASSET NO.

14077

DPTI DRAWING NO.
7234-AR-2025

DRAWN BY - CHECKED BY
Author Checker

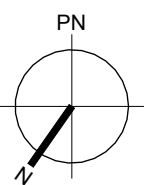
SCALE - SHEET SIZE
1 : 100@A1

SHEET NO.

A2101

REVISION

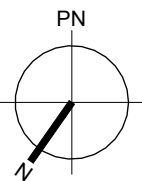
14

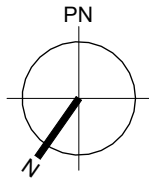
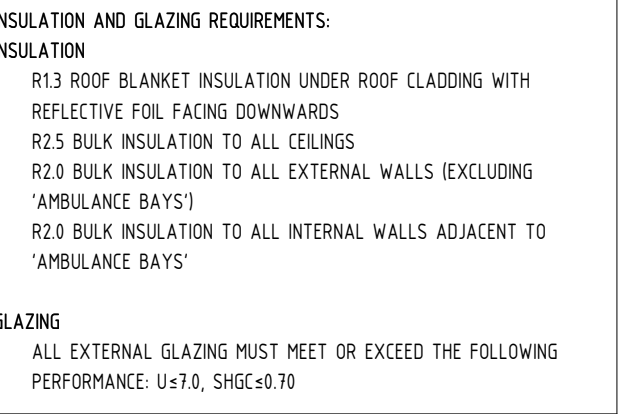




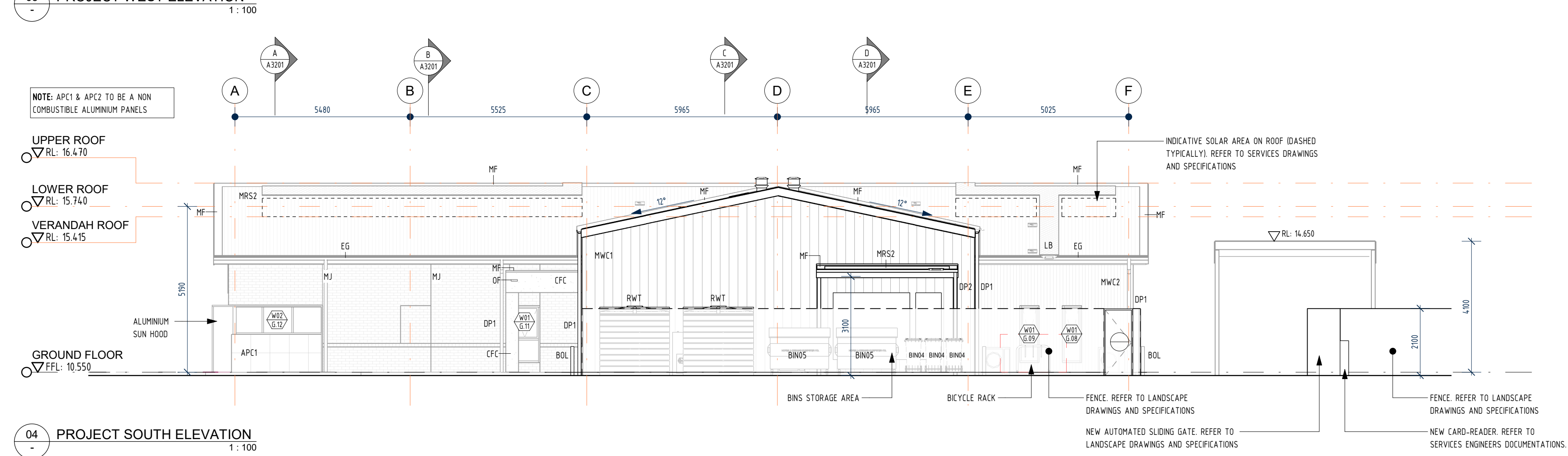
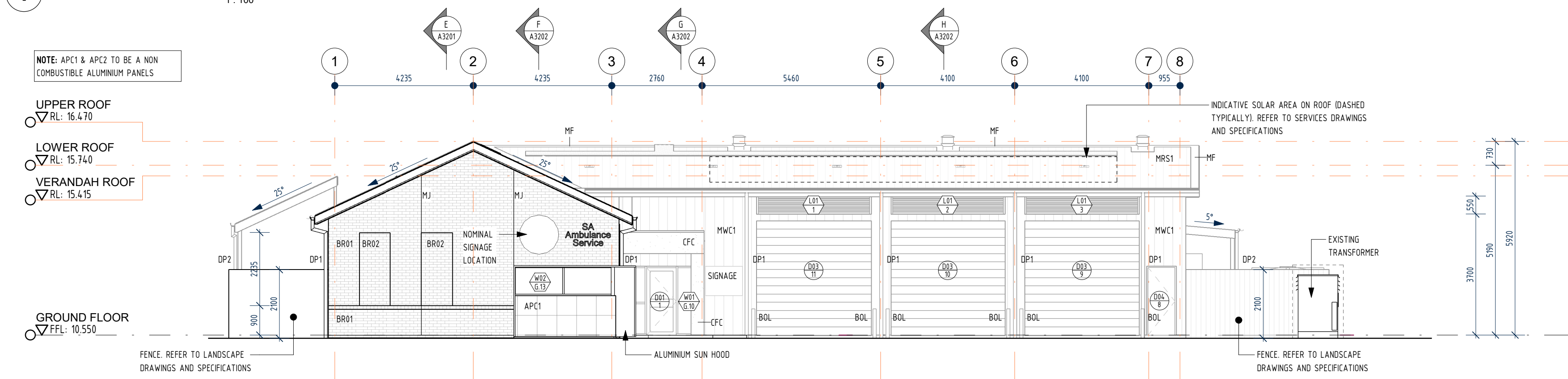
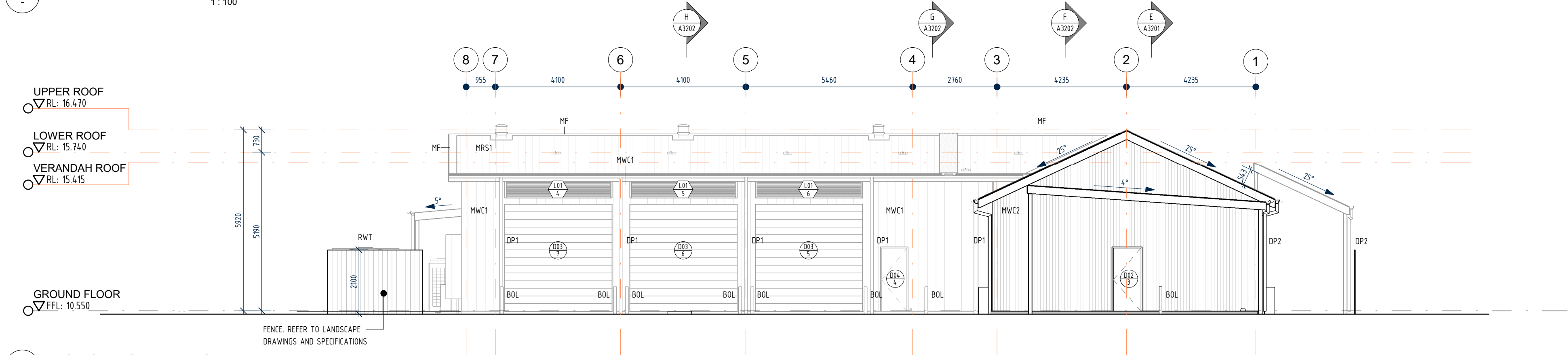
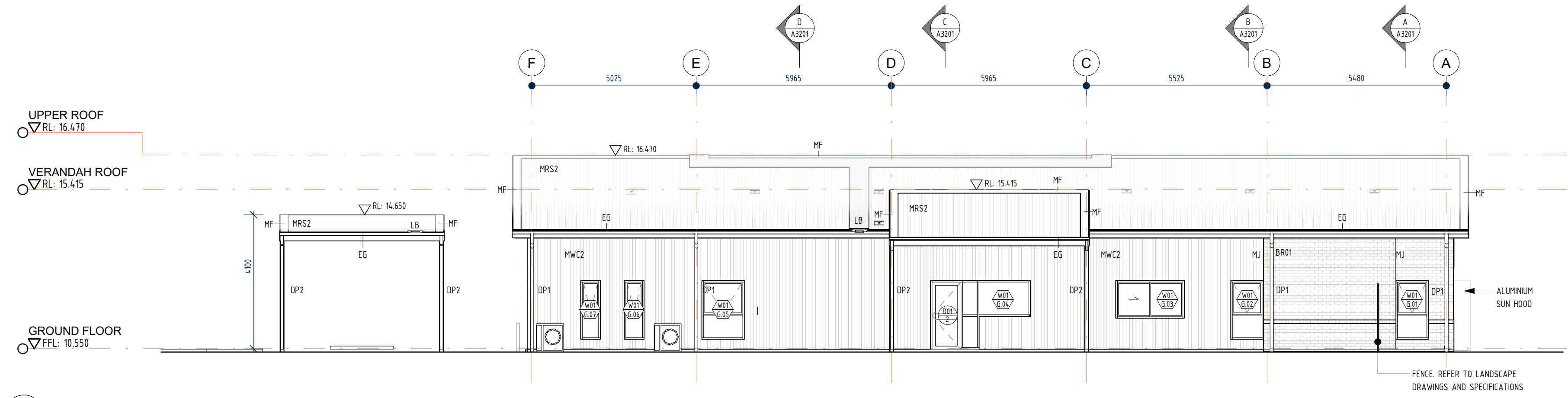
REV	DATE	AMENDMENTS	INITIAL
9	05.08.25	ISSUE FOR COORDINATION	JN
8	04.08.25	ISSUE FOR COORDINATION	JN
7	31.07.25	ISSUE FOR COORDINATION	JN
6	13.06.25	85% DOCUMENTATION ISSUE	WS
5	22.05.25	ISSUE FOR COORDINATION	WS
4	16.05.25	ISSUE FOR COORDINATION	DM
3	17.04.25	60% DOCUMENTATION ISSUE	DM
2	28.03.25	ISSUE FOR COORDINATION	HB
1	07.03.25	ISSUE FOR COORDINATION	DM
0	18.02.25	ISSUE FOR COORDINATION	HB

INSULATION AND GLAZING REQUIREMENTS:
INSULATION
- R1.3 ROOF BLANKET INSULATION UNDER ROOF CLADDING WITH REFLECTIVE FOIL FACING DOWNWARDS
- R2.5 BULK INSULATION TO ALL CEILINGS
- R2.0 BULK INSULATION TO ALL EXTERNAL WALLS (EXCLUDING 'AMBULANCE BAYS')
- R2.0 BULK INSULATION TO ALL INTERNAL WALLS ADJACENT TO 'AMBULANCE BAYS'
GLAZING
- ALL EXTERNAL GLAZING MUST MEET OR EXCEED THE FOLLOWING PERFORMANCE: U<1.0, SHGC<0.70

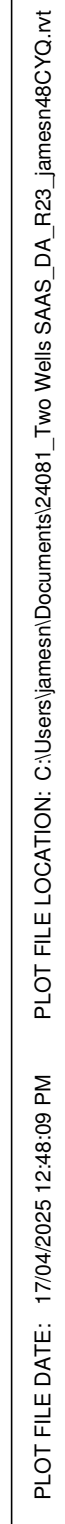




REVISION



REV	DATE	AMENDMENTS	INITIAL
7	31.07.25	ISSUE FOR COORDINATION	JN
6	13.06.25	85% DOCUMENTATION ISSUE	WS
5	22.05.25	ISSUE FOR COORDINATION	WS
4	16.05.25	ISSUE FOR COORDINATION	DM
3	17.04.25	60% DOCUMENTATION ISSUE	DM
2	28.03.25	ISSUE FOR COORDINATION	HB
1	07.03.25	ISSUE FOR COORDINATION	DM
0	18.02.25	ISSUE FOR COORDINATION	HB



PLOT FILE DATE: 17/04/2025 12:48:09 PM PLOT FILE LOCATION: C:\Users\jamesn\Documents\24081_Two Wells SAAS_DA_R23_jamesn48C\YQ.mt

24081- TWO WELLS SAAS AMBULANCE STATION SELECTIONS SCHEDULE

1. Exterior – General

CODE	ITEM	LOCATION	DESCRIPTION	FINISH	LEAD TIME	REVISION

2. Exterior – Ground Finishes

CODE	ITEM	LOCATION	DESCRIPTION	FINISH	LEAD TIME	REVISION
PV01	Exposed Aggregate Concrete		Refer landscape documentation and specification			
PV02	Asphaltic Paving		Refer landscape documentation and specification			
PV03	Wood Float Concrete		Refer landscape documentation and specification			
PV04	Outdoor Commercial Brick Pavers In Herringbone Pattern		Refer landscape documentation and specification			

3. Exterior – Walls

CODE	ITEM	LOCATION	DESCRIPTION	FINISH	LEAD TIME	REVISION
MWC1	Metal Wall Cladding 1	Refer to Drawings for extent	Product: ZENITH® range IMPERIAL™ 325 Roofing & Cladding Product material type: Colorbond Steel Thickness: (Base metal) mm: 0.48BMT Fixing Method: To manufacturer's recommendations. Rib Height: 38mm Cover Width: 325mm Supplier: Stratco or equal approved by Architect	Bluegum		

24081- TWO WELLS SAAS AMBULANCE STATION SELECTIONS SCHEDULE

3. Exterior – Walls						
CODE	ITEM	LOCATION	DESCRIPTION	FINISH	LEAD TIME	REVISION
MWC2	Metal Wall Cladding 2	Refer to Drawings for extent	Product: Custom Orb Roofing & Cladding Product material type: Colorbond Steel Thickness: (Base metal) mm: 0.48BMT Fixing Method: To manufacturer's recommendations. Supplier: Stratco or equal approved by Architect	Southerly		
BR1	New Brick Wall	Refer to External Elevations for extent	Product: Austral Bricks - San Selmo Classico Aged Red Full brick Size: 230Lx110wx76h mm Fixing Method: To manufacturer's recommendations. Supplier: Brickwork or equal approved by Architect	San Selmo Classico Aged Red		
BR2	Thin Brick Facing Unit	Refer to External Elevations for extent	Product: Austral Bricks - San Selmo Classico Aged Red Full brick Size: 230Lx22wx76h mm Fixing Method: To manufacturer's recommendations. Supplier: Brickwork or equal approved by Architect	San Selmo Classico Aged Red		
APC1	Aluminium Panel	Refer to External Elevations for extent	Product: Non-Combustible Aluminium Panels Fixing Method: To manufacturer's recommendations. Supplier: Nucleo or equal approved by Architect	Black		
APC2	Aluminium Panel	Refer to External Elevations for extent	Product: Fixing Method: To manufacturer's recommendations. Supplier: Nucleo or equal approved by Architect	Cool White		

4. Exterior – Roof						
CODE	ITEM	LOCATION	DESCRIPTION	FINISH	LEAD TIME	REVISION
MRS1	Roofing Type 1	Refer to Drawings for extent	Product: ZENITH® range IMPERIAL™ 325 Roofing & Cladding Product material type: Colorbond Steel Thickness: (Base metal) mm: 0.48BMT Fixing Method: To manufacturer's recommendations. Rib Height: 38mm Cover Width: 325mm Supplier: Stratco or equal approved by Architect	Bluegum		

24081- TWO WELLS SAAS AMBULANCE STATION SELECTIONS SCHEDULE

4. Exterior – Roof						
CODE	ITEM	LOCATION	DESCRIPTION	FINISH	LEAD TIME	REVISION
MRS2	Roofing Type 2	Refer to Drawings for extent	Product: Custom Orb Roofing & Cladding Product material type: Colorbond Steel Thickness: (Base metal) mm: 0.48BMT Fixing Method: To manufacturer's recommendations. Supplier: Stratco or equal approved by Architect	Southerly		
	Corner Guards	To all corners, refer to drawings for details	Lysaght or Equal Approved Product: Custom Folded Steel Material: 4mm minimum BMT Supplier: Lysaght or Revolution Roofing or similar approved by the Architect Allow for 150mm minimum return refer to drawings for detail	Colour: Bluegum		
EG	Eaves Gutter	Roof Plan	Lysaght or Equal Approved Product: Half Round Flat Back Gutter Width: 180mm x 98mm. Refer to manufactures section detail. Thickness: 0.55 BMT Fixing: Proprietary external clips & end plate to both sides. Min 1:200 fall to manufacturers specification. Install to manufacturers specification.	Colour and finish : to match adjacent roof colour (Bluegum or Southerly) Clips & End Plate		
DP	Downpipe	Floor Plan Roof Plan	PVC pipe in various diameters stepping up in size to match existing. Product: 100/125/150/225 DIA PVC sewer grade pipe with screw gap inspection opening Refer to engineers' documents for DP diameter	Colour and finish : to match adjacent roof colour (Bluegum or Southerly)		
MF	Proprietary flashings, ridge, barge flashing & cappings	Roof Plan	Thickness: Colorbond 0.60BMT unless indicated otherwise. Provide pre-cut notched eaves flashing and bird proofing where necessary	Colour and finish : to match adjacent roof colour (Bluegum or Southerly)		
	Gutters Guards	At all DP Locations	Provide Steel Ball guards to all gutters at all downpipe and sump outlets.	Stainless Steel		